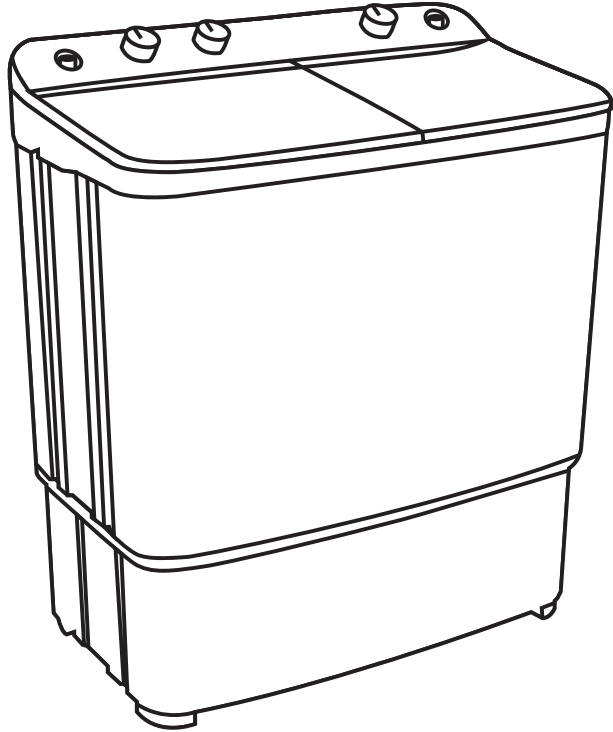


Twin Tub Washing Machine

User Manual

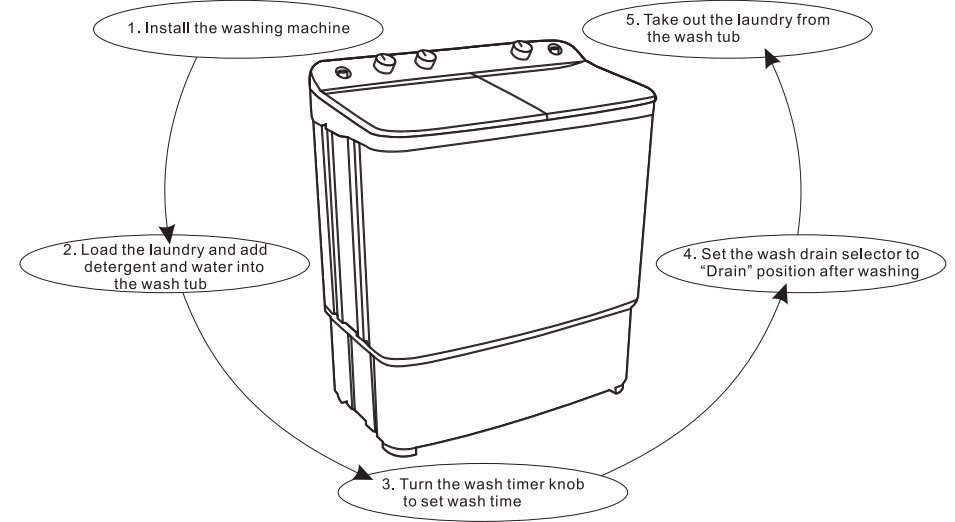
DW 7500 G



Before operating this unit, please read this manual thoroughly, and retain for future reference.

ڈاؤلینس ریلائبل ہے!

HOW TO USE



Control Panel

- 1. Water Inlet**
Connect the hose from the water faucet to feed water to the tub.
- 2. Wash Timer**
Used to select the desired time for washing or rinsing.
- 3. Buzzer**
Buzzer will ring automatically before the completion of wash timer cycle.

SPECIFICATION

Model No.	DW 7500 G
Intended use	Household
Type of appliance	Twin Tub
Power source	Refer to specification LABEL
Dimension (units: mm)	870 x 489 x 1001
Protection against electric shock	Class 1 appliance
Protection against moisture	Splash-proof appliance
Standardized water consumption	89.1 (High) 68.1 (Medium) 48.7 (Low) (Litres)

Design and specifications could be changed without notice.

INSTALLATION

■ Location & Environment

- ★ Do not place the twin tub in steamy rooms or where the twin tub is directly exposed to rain. Moisture may destroy the electrical insulation and cause an electric shock hazard.
- ★ Place twin tub on a sturdy flat surface. If the twin tub is placed on an uneven or weak surface, noise or vibrations may occur. (Allowable inclination is max. 2 degrees).
- ★ Avoid direct sunlight or heating device. As plastic and electrical components are affected by direct heat, never place the washer near heater, boilers etc.
- ★ Do not place or store the washer below 0°C (32°F) to avoid any damage from freezing.

■ Electrical Connection

- ★ This unit is designed to operate from an adequate supply mentioned at the rating label stuck to the rear of it.

Caution: If the power cord is damaged, it should be replaced by a repair shop appointed by the manufacturer, because special purpose tools are required.

HOW TO WASH

Preparation

- ★ Sort the clothes into groups-white, colorfast, non-colorfast, delicates, lint free, lint producer, etc., and wash according to the **LAUNDRY GUIDE**. (See Laundry Guide).
- ★ Clothes with worn or torn patches should first be mended. Empty out all pockets and close all side fasteners. (pocket, covers, belts, etc). Treat bad stains prior to washing.
- ★ Insert power cord plug into the power point and switch on.

How to Wash

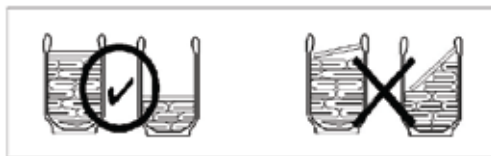
1. Set the wash timer knob to position "0".
2. Select the wash action to the desired position.
3. Open the water faucet and feed water to the water level indicated inside the wash tub.
4. Put detergent and laundry into the wash tub.
5. Set wash time by the wash timer.

HOW TO RINSE

1. Set the wash action to the desired position.
2. Turn the water tap on.
3. When the rinsing water becomes clear, turns off the water tap.

HOW TO SPIN DRY

1. Put the wet clothes into the spin dryer drum, being sure that they are well balanced as shown below.



2. Place the safety cover horizontally on the top.
3. Close the inner lid and spin dryer lid. (The machine will not spin if the spin dryer lid is open)
4. Turn the spin timer to the clockwise direction until you reach the desired spin time position.

Caution: Ensure that the spin dryer drum completely stops before reaching into remove the laundry. Be specially careful of children.

- ★ If there is any abnormal vibration during spinning, open the spin dryer lid to stop the spin dryer drum and rearrange the clothes to be in good balance.
- ★ Should spinning fail to stop within 15 seconds after spin dryer lid is open, the brake is out of order. Immediately stop using the machine and call Dawlance Customer Service.

LAUNDRY GUIDE

Washing Time & Wash Action Table

KIND OF CLOTHING	WASHING TIME
Extremely soiled heavy fabric	10-15 minutes
Linen, cotton, etc.	8-10 minutes
Ordinary clothes (underwear, etc.)	7 minutes
Slightly soiled synthetic fiber	2-5 minutes
100% wool, mixed wool knitting, thin synthetic fiber with tags indicating hand washing	2-5 minutes

CLEANING AND MAINTENANCE

At the end of every washing:

- Switch off the electricity.
- Ensure that timer knob reached back to "0" position.
- Wipe off spillage (detergent powder, etc.) and generally wipe over the tub and base with a dry duster.

Note: Cleaning after use will extend the life of your washing machine. Before cleaning disconnect the power cord from the electrical outlet.

Lint Filter

- Step I Remove the overflow filter by pulling it forward.
- Step II Wash off the lint stuck on the overflow filter during overflowing.
- Step III Re-fix the overflow filter by first inserting its bottom section and then pushing the upper part firmly into the socket.

Note: If during washing, some residue or deposits have accumulated in the net, then after finish washing, remove the filter by first push down and pull it out.

Cleaning of dirt underneath Pulsator & on Drain Strainer

Dirt, lint etc. may accumulate underneath the pulsator and on a Drain Strainer. Carry out cleaning after every four to six washes or whenever required, as per following procedure:

- Step I After finishing the wash, fill the wash tub upto three quarters with clean lukewarm water.
- Step II Set wash action to "STRONG" position.
- Step III Operate washer for 10 minutes.
- Step IV Drain out the water.

Note: The above procedure will remove the dirt, lint etc. accumulated underneath the pulsator and on the drain strainer.

Cautions

- Do not connect to the hot water supply.
- This appliance is not intended for use by persons (including children) with reduced physical, sensory or mental capabilities, or lack of experience and knowledge, unless they have been given supervision or instruction concerning use of the appliances by a person responsible for their safety. Children should be supervised to ensure that they do not play with the appliance.
- This product should not be disposed with other household wasters. To prevent possible harm to the environment or human health from uncontrolled waste disposal, recycle it responsibly to promote the sustainable reuse of material resources. To return your used device, please use the return and collection system or contact the retailer where the product was purchased. They can take this product for environment safe.

POINTS TO REMEMBER

- Avoid using excessive amounts of bleach, soap powder or detergent. Use the amount recommended by the respective manufacturers.
- If the machine is installed in areas subject to freeze, ensure that it is completely drained after use.
- When washing delicate, clothes e.g., silks, fine nylons, laces etc., it is advisable to place them in a mesh bag to prevent them from possible damage.
- Do not wash lint attracting fabrics with lint producers, e.g., black socks or dark colored jumpers with white fluffy towels, napkins, etc.
- Avoid placing a wet load on the control panel.
- Do not move machine in left or right direction because wheels are unidirectional.

BEFORE YOU CALL FOR SERVICE

There may be times when your suspend washing machine requires maintenance. Before calling for service please check the following points. You may be pleasantly surprised that an apparent malfunction can be easily rectified as follows:

	POSSIBLE CAUSE	HOW TO FIX IT
■ Twin tub does not start	1. Twin tub may not be plugged in or connection may be loose.	1. Make sure the plug is tightly pushed into wall outlet.
	2. House fuse blown or circuit breaker tripped.	2. Electrical line is overloaded. Do not run other appliances when twin tub is in use.
	3. Twin tub timer is not set.	3. Electrical lines may be inadequate. Contact an electrician.
■ Rattling and clanking noise	1. Foreign objects such as coins or safety pins may be in the tub.	4. Inappropriate house fuse or circuit breaker is being used. Use only a 15 Amp., time delay fuse or circuit breaker.
	2. Belt, buckets and metal fasteners are hitting the washer tub during the washing cycle.	5. Set the twin tub timer.
		1. Stop machine and check the tub.
		2. Call your authorized service agency.
		3. To prevent unnecessary noise and damage to the tub, fasten fasteners and turn garments inside out.
■ Vibrating noise	1. Twin tub is not levelled and levelling legs screws may not be securely tightened.	1. Relevel twin tub by adjusting levelling legs, screw must be tightened.
	2. Clothes not evenly distributed in tub.	2. Stop washer and redistribute clothes.
	3. Twin tub may not be installed on a solid, firm floor.	3. Additional floor bracing may be needed. Contact carpenter to correct sagging or slopping floor.
■ Thumping sound	1. Heavy wash loads may produce a thumping sound at the beginning.	1. This is normal.
		2. If sound continues stop machine, redistribute clothes.

10 YEARS GRAND WARRANTY



021-111-11-7359(RELY)

Email: customer.service@dawlance.com.pk

THANK YOU FOR TRUSTING DAWLANCE

This is your personal warranty from **DAWLANCE (PRIVATE) LIMITED**. It applies to you as the original purchaser provided it is purchased from an authorized dealer and it is not transferable.

1. THE WARRANTY IS VALID PROVIDED:

- i) The warranty card is properly filled and bears dealer's seal at the time of purchase. Unfilled or partially filled warranty cards and those with cutting and rewriting will not be entertained.
- ii) The washing machine has not been repaired by any person other than technician of DAWLANCE CUSTOMER SERVICE CENTRE and AUTHORIZED CONTRACT WORKSHOP.
- iii) The washing machine has been used with the original 3 pin plug connected to a properly earthed socket.

2. ONE YEAR PARTS WARRANTY:

Any part of dawlace washing machine, which proves to be defective in material or workmanship within one year of purchase, will be repaired or replaced with a new or functionally operative part free of charge. Warranty will not be applicable after one year validity period as mentioned below under the heading "Warranty Validity". The cost of transportation, and home attending charges will be borne by the customer.

3. TEN YEARS MOTOR WARRANTY:

If the motor of the working machine becomes inoperative at any time point, since the time of purchase, as a result of defects in material or workmanship, it will be replaced free of charge by a new or functionally operational motor, once only. The cost of any other parts, labour, home attending and transportation charges will be borne by the customer.

4. WARRANTY VALIDITY:

As per the rules and regulation specified in this warranty card, the "One Year Parts" warranty will be valid till _____. After this period, the warranty card will not be valid for any type of warranty claim.

5. THE WARRANTY WILL NOT BE VALID:

- i) Where defects have resulted from abnormal electrical load, short-circuiting, low or high voltage poor wiring.
- ii) Where the washing machine has been tampered with or altered in any way, or has been subject to misuse, negligence or accident, or has its serial number altered, disfigured or removed.
- iii) Damage due to insect bites or Rodents (Mouse, Rat etc.).

6. This warranty and the use of this product will be governed by Pakistani law.

7. Any proceedings arising out of or in connection with this warranty or the use of the product may only be brought in a court of competent jurisdiction in Karachi.

8. The company shall not be responsible for any loss or damage occurred to the property arising out of the use/operation the product.

DEALER COPY

ڈیلر: _____ خریدار کا نام: _____ ماڈل نمبر: DW 7500 G
 خریدار کا پتہ: _____ خریدار کا کنٹیکٹ نمبر: _____ خریدار کا ای میل: _____

ڈاؤ لینس پر بھروسے اور اعتماد کا شکریہ ماڈل نمبر: DW 7500 G سیریل نمبر: _____

ڈاؤ لینس (پرائیویٹ) لمیٹڈ کی جانب سے یہ آپ کی ذاتی وارنٹی ہے۔ اس کا اطلاق آپ پر اصل خریدار کی حیثیت سے ہوتا ہے۔ بشرطیکہ یہ ہمارے کسی بھی مقرر کردہ ڈیلر سے خرید گیا ہو اور یہ کسی دوسرے کے نام منتقل نہیں ہو سکتی۔

۱۔ وارنٹی کا اطلاق مندرجہ ذیل صورتوں میں ہوگا:

- (i) وارنٹی کارڈ مکمل طور پر بھرا ہوا ہے اور اس پر خریداری کے وقت ڈیلر کی مہر موجود ہے۔ مکمل یا بغیر بھرے ہوئے کارڈ یا لکھاؤ میں تبدیلی یا اس کو مٹا یا گھسیا ہوا دوبارہ لکھنے کی کوشش کی گئی ہو تو اس پر وارنٹی کا اطلاق نہیں ہوگا۔
- (ii) واشنگ مشین ڈاؤ لینس سروس سینٹر یا منظور شدہ ورکشاپ کے ٹیکنیشن کے علاوہ کسی غیر متعلقہ شخص سے مرمت نہ کروائی گئی ہو۔
- (iii) واشنگ مشین کا اور بجیل ۳ پین کا پلگ تبدیل نہیں کیا گیا ہے اور صحیح طور پر اتھارے گئے ساکت میں استعمال کیا گیا ہو۔

۲۔ ایک سال پائرس وارنٹی: ڈاؤ لینس واشنگ مشین کا کوئی پرزہ اگر میٹریل یا کارگری کے نقص کی وجہ سے خریداری کی تاریخ سے ایک سال کے عرصہ میں ناقص ثابت ہوتا ہے تو بلا معاوضہ درستی یا تبدیلی سنے یا قابل استعمال پرزے سے کر دی جائے گی۔ جیسا کہ درج ذیل وارنٹی کے اطلاق میں واضح کیا جا چکا ہے وارنٹی کا اطلاق وارنٹی یونٹ میں دی گئی ایک سال پائرس وارنٹی کی تاریخ کے بعد نہیں ہوگا۔ صرف نقل و حمل اور گھر پر وٹ کرنے کا معاوضہ بذمہ خریدار ہوگا۔

۳۔ دس سال موٹر وارنٹی: اگر مشین کی موٹر میں خرابی آجائے، کسی بھی میٹریل میں یا پلے میں کوئی مسئلہ ہو بھی تو مشین کی موٹر صرف ایک بار بغیر کسی چارجز کے تبدیل کر دی جائے گی۔ دیگر پائرس علاوہ موٹر، لمبر، نقل اور گھر پر وٹ کرنے کا معاوضہ بذمہ خریدار ہوگا۔

۴۔ وارنٹی میعاد: اس وارنٹی کارڈ پر اوپر دیے گئے قواعد و ضوابط کے مطابق ایک سال پائرس وارنٹی تک قابل حصول ہے۔ اس مدت کے بعد یہ وارنٹی کارڈ کسی قسم کی وارنٹی کے حصول کے لئے ناقابل استعمال ہوگا۔

۵۔ وارنٹی کا اطلاق مندرجہ ذیل صورتوں میں نہیں ہوگا:

- (i) بجلی کے غیر معمولی لوڈ، شارٹ سرکٹ، دو بجلی کی کمی بیشی یا ناقص وائرنگ سے ہونے والی خرابیاں۔
- (ii) ایسی واشنگ مشین جس میں کسی قسم کی تبدیلی یا تخریب کی گئی ہو یا حادثے کا شکار ہوئی ہے یا غلط طریقے سے استعمال کیا گیا ہے یا سیریل نمبر تبدیل کر دیا گیا ہے یا اس کے خلاف منادے گئے ہوں۔
- (iii) کسی بھی انسیکٹ (Insect) کے نقصان پہنچانے کی وجہ سے خرابیاں یا چوہوں وغیرہ کے گزرنے سے۔

۶۔ اس وارنٹی اور پروڈکٹ پر پاکستانی قانون لاگو ہوگا۔

۷۔ اس وارنٹی اور پروڈکٹ کے حوالے سے کسی قسم کی پیچیدگیاں صرف کراچی کی عدالتوں میں ہی نمٹائی جائیں گی۔

۸۔ اس پروڈکٹ کو استعمال کرنے سے کسی قسم کا نقصان یا ضائع ہونے پر کچھن ڈمدا نہیں ہوگی۔

اپنا نام: _____ ماڈل نمبر: _____ سیریل نمبر: _____
 ڈیلر کا نام: _____ پتہ: _____
 رہائش گاہ کا فون نمبر: _____ دفتر کا فون: _____ موبائل نمبر: _____ ای میل ایڈریس: _____

ڈیلر کے استعمال کے لئے
 خریداری کی تاریخ: _____
 برانچ کا نام: _____

شکایت کی صورت میں فون نمبر: 021-111-11-7359 یا ای میل customer.service@dawlance.com.pk پر رابطہ کریں۔ www.dawlance.com.pk dawlancepakistan